



Professional Label Printer series

- Print in Black and Red to highlight important information.
- Wide range of connectivity options.
- PC, Mac OS®, iOS® and Android™ compatibility.
- 110 labels per minute fast print speed.
- Standalone printing function with no PC required for Food and Retail industries.





Versatile labelling options

Boasting the highest print speeds with the most connectivity options in their class, QL-800 and QL-820NWB label printers are the ideal solution for many types of business.

Print black and red* text without ink

Draw attention to important information by including red and black print on labels which is ideal for highlighting use-by dates, allergens and other critical information.



Wide variety of connectivity options

All models allow easy connection to desktop computers using USB connection. QL-820NWB label printer can supports Bluetooth, LAN and Wireless connectivity.

Create labels the size required

Labels are available in a range of traditional die-cut (pre-sized) or continuous rolls that allows the built-in cutter to trim the label to the precise length required and up to one metre long.



Print from desktop, mobile devices or stand-alone

All models are PC and Mac OS® systems compatible. QL-820NWB label printer can connect to smartphones and tablets using the built-in wireless connections. Select and print labels stored in the memory of QL-820NWB label printer using the large LCD display and integrated control panel.

* Requires DK-22251 62mm x 15.24m continuous length label roll to print in black and red.

QL-800 and QL-820NWB professional label printers offer unrivalled versatility not only for office but also for retail, food, postal, facilities management and many other industries.

Create labels in black and red* print and up to 1 metre in length from PC, Mac OS®, iOS®** or Android™** devices. Several wired and wireless connectivity options are available and with the ability to print directly. Labels can be stored in the label printer's memory using the integrated LCD control panel on QL-820NWB label printer or on external devices that connect to the label printer.

For developers and systems integrators looking to incorporate label printing as part of their solutions, Software development kits (SDK) for Windows®, iOS® and Android™ are available to download from Brother developer centre website free of charge, providing the interface to support both QL-800 and QL-820NWB label printers.



Features



QL-800



QL-820NWB

	QL-800	QL-820NWB
Fast print speed – number of labels per minute	93	110
Print labels with both black and red* print	•	•
Advanced label design software for PC and Mac OS® (P-touch Editor)	•	•
Built-in label design software for PC and Mac OS® that requires no software or printer driver installation (P-touch Editor Lite)	•	
USB	•	•
Wi-Fi with AirPrint		•
Wired Ethernet		•
Bluetooth for easy connection to iOS® and Android™ devices		•
Stand-alone printing of labels stored in label printer memory		•
Optional Rechargeable Li-ion battery without power sources required		•
Software Development Kits available for Microsoft Windows®***, iOS® and Android™ devices to add label printing to solutions	•	•

* Requires DK-22251 62mm x 15.24m continuous length label roll to print in black and red.

*** QL-800 label printer can only supports Microsoft Windows® SDK.

Advanced functionality

QL-820NWB label printer with its stand-alone printing function and remote FTP template update allows label printing directly from its control panel. The advanced connectivity options offer the widest compatibility with all types of devices.

Stand-alone label printing

QL-820NWB label printer has a large memory to store label templates designed in P-touch Editor. Label templates can be uploaded to the printer's memory and accessed using the integrated control panel and backlit graphic LCD display. Ideal for printing current or future date and time on labels in the food and retail industries.



Remote template update via FTP

When QL-820NWB label printers are deployed at multiple locations, updating templates in all the label printers will be very time intensive. QL-820NWB label printer can automatically connect using FTP to a remote server. If any new templates are found, it will be updated automatically. This helps companies to save time and money while ensuring consistent operation at all remote sites.

AirPrint* and Bluetooth with MFi (Made for iPod®, iPhone® and iPad®) compatibility

QL-820NWB label printer can supports Apple® AirPrint* from compatible apps on iOS® devices and Mac OS® systems. QL-820NWB label printer offers Bluetooth connectivity that can easily connect to iOS® and Android™ devices to the label printer.



* iOS® and Mac OS® systems support black print when using the default AirPrint® function. The red print capability is available from iOS® devices when using AirPrint with apps developed using Brother Software Development Kit (SDK).

Software solutions

With label design apps for desktop PC, mobile devices and SDK integration with QL-800 and QL-820NWB label printers into applications, these are the best labelling printing options available.

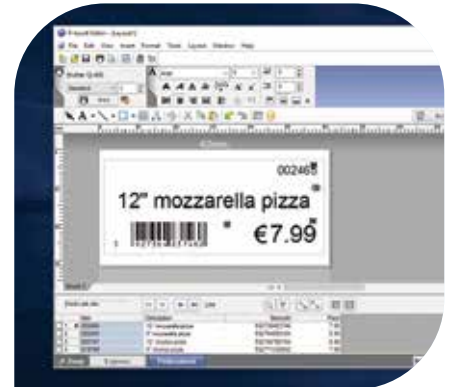


P-touch Editor Lite* / P-touch Editor Lite LAN*

Built into QL-800 label printer, this easy to use label design software works without the need to install any software or printer drivers. Work like a USB flash drive, connect to PC or Mac OS® systems using USB. Software will automatically appear. Include images, frames and any fonts on the label design software to print.

P-touch Editor with Microsoft® Office add-in

Design professional labels with images, logos, barcodes and frames. Link to the data stored in Excel or in .csv files to print as many labels quickly and efficiently. Microsoft® Office add-in allows the highlight, click and print from within Microsoft® Word, Excel or Outlook.



Brother iPrint & Label app** for iOS® and Android™ smartphones and tablets

Print labels on QL-820NWB label printer using the free iPrint&Label app. Connect via Wi-Fi or Bluetooth and choose from one of the pre-defined templates or quickly design a label from scratch. This free app is available from the mobile device's app store by searching for "Brother iPrint&Label"

Software Development Kits for Windows®, iOS® and Android™

System integrators and software developers can take advantage of the various Brother SDK available to integrate label printing directly to their own apps and software easily.

For more information, please visit:

<https://www.brother.co.jp/eng/dev/bpac/index.aspx>

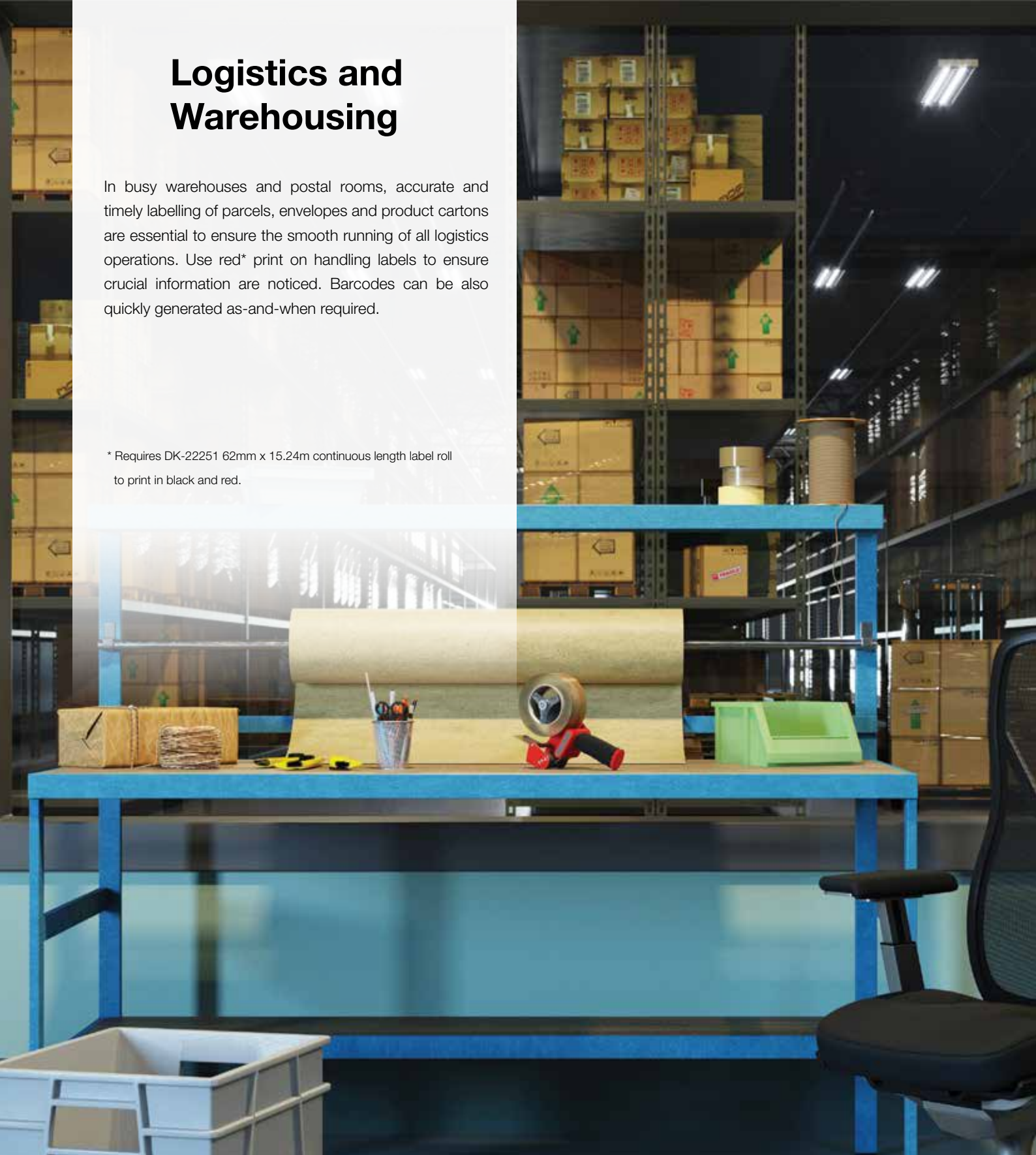


* Black print capability only. Use P-touch Editor for black and red printing.

Logistics and Warehousing

In busy warehouses and postal rooms, accurate and timely labelling of parcels, envelopes and product cartons are essential to ensure the smooth running of all logistics operations. Use red* print on handling labels to ensure crucial information are noticed. Barcodes can be also quickly generated as-and-when required.

* Requires DK-22251 62mm x 15.24m continuous length label roll to print in black and red.



Handling labels



Temporary signage



Shipping labels



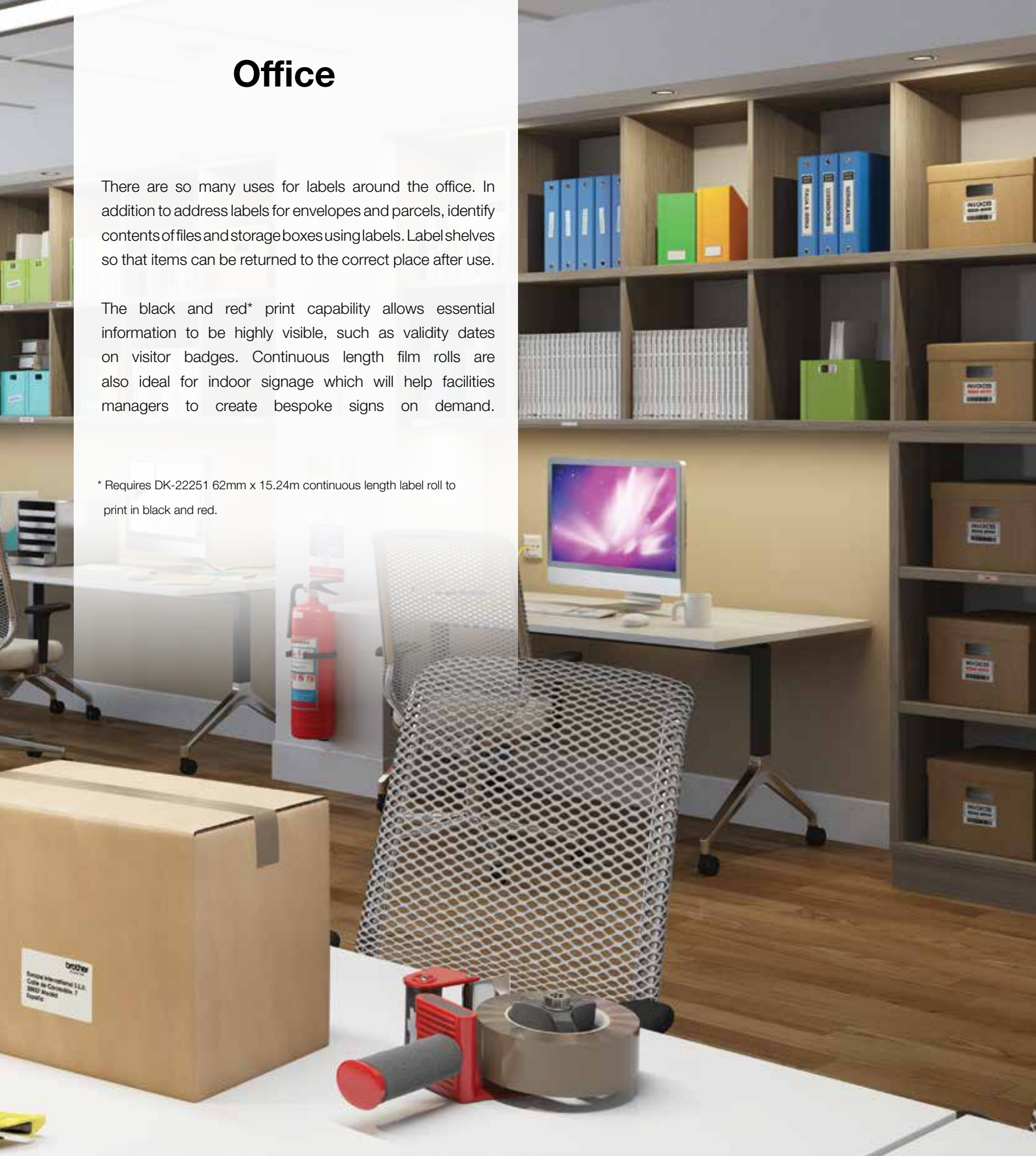
Product packaging

Office

There are so many uses for labels around the office. In addition to address labels for envelopes and parcels, identify contents of files and storage boxes using labels. Label shelves so that items can be returned to the correct place after use.

The black and red* print capability allows essential information to be highly visible, such as validity dates on visitor badges. Continuous length film rolls are also ideal for indoor signage which will help facilities managers to create bespoke signs on demand.

* Requires DK-22251 62mm x 15.24m continuous length label roll to print in black and red.



Visitor badges



Postage labels



Document filing



Indoor signage

Retail

Conveying product pricing and any special offers to shoppers quickly is crucial for the retail industry. Print price labels for product tags that can include barcodes. Use red* print to highlight special offers or promotions by creating eye-catching indoor signage.

* Requires DK-22251 62mm x 15.24m continuous length label roll to print in black and red.



Pricing/Barcode labels



Promotion signage

Food

On-demand label printing is a critical part of the food industry, such as highlighting allergen information to consumers, show use-by/best before dates and product pricing which include EAN-8 and EAN-13 barcodes.

QL-820NWB label printer with its stand-alone label printing function is ideal for counter-top use and printing labels on-demand. Takeaway outlets can print details of the orders quickly with address information when there is delivery required.



Takeaway orders



Shelf-edge labelling



DK consumables

Wide range of labels available in paper and plastic film material, pre-sized labels or continuous rolls

DK Die-Cut Labels	Material	Colour	Size	Item No.
Standard address label (400/roll)	Paper	White	29 x 90 mm	DK-11201
Large address label (400/roll)	Paper	White	38 x 90 mm	DK-11208
Small address label (800 roll)	Paper	White	29 x 62 mm	DK-11209
Shipping label (300/roll)	Paper	White	62 x 100 mm	DK-11202
File folder label (300/roll)	Paper	White	17 x 87 mm	DK-11203
Multi-purpose label (400/roll)	Paper	White	17 x 54 mm	DK-11204
Square label (1000/roll)	Paper	White	23 x 23 mm	DK-11221
CD/DVD label (100/roll)	Film	White	58 mm	DK-11207
Round label (1200/roll)	Paper	White	12 mm	DK-11219
Round label (1000/roll)	Paper	White	24 mm	DK-11218

DK Continuous-Length Tapes - 30.48m	Material	Colour	Size	Item No.
Continuous length	Paper	White	12 mm	DK-22214
Continuous length	Paper	White	29 mm	DK-22210
Continuous-length	Paper	White	38 mm	DK-22225
Continuous length	Paper	White	50 mm	DK-22223
Continuous length	Paper, non-adhesive	White	54 mm	DK-N55224
Continuous length	Paper	White	62 mm	DK-22205
Continuous length	Paper, removable	White	62 mm	DK-44205
Continuous length	Paper, removable	Yellow	62 mm	DK-44605

DK Continuous-Length Tapes - 15.24m	Material	Colour	Size	Item No.
Continuous length	Film	White	29 mm	DK-22211
Continuous length	Film	White	62 mm	DK-22212
Continuous length	Film	Yellow	62 mm	DK-22606
Continuous length	Film	Clear	62 mm	DK-22113
Continuous length - Black/Red print	Paper	White	62 mm	DK-22251

Accessories

PA-BU-001 optional rechargeable battery unit

Rechargeable Li-ion battery can be mounted on the base of QL-820NWB label printer to offer label printing without power source. This solution is ideal for the use on carts or for printing exhibition badge onsite. With a fast charge of under 2 hours 30 minutes, QL-820NWB label printer can prints up to 4300 labels (monochrome) or 1400 labels (colour) per charge*.



* Continuous printing using USB when fully charged.

Specifications

QL-800

QL-820NWB

Printing / Media		
Printing technology	Direct thermal with 2 colour print capability	
Print resolution	300dpi x 300dpi (standard) / 300dpi x 600dpi (high resolution mode)	
Print speed (single colour)	Maximum 148mm per second (93 labels per minute)	Maximum 176mm per second (110 labels per minute)
Print speed (two colour)	Maximum 24mm per second (equivalent to 15 labels per minute)	
Label widths	12mm - 62mm	
Maximum print width	58mm	
Maximum print length	1 metre	
Media sensor type	Reflective	
Cutter	Yes (full cut / guillotine type)	
Media types	DK Rolls (DK die-cut labels / DK continuous tape)	
LCD		
Type	-	320 dot x 120 dot graphic LCD with backlight
Connectivity		
USB	USB version 2.0 full-speed	
USB host capability	-	Yes (HID class)
Bluetooth	-	Bluetooth 2.1+ EDR
Bluetooth profiles	-	SPP (Serial Port Profile) OPP (Object Push Profile) BIP (Basic Imaging Profile) HCRP (Hard Copy Cable Replacement Profile) iAP profile
iOS® and Android™ compatibility	-	Yes (Bluetooth, Wi-Fi, Wired LAN)
Wireless LAN	-	IEEE802.11b/g/n
Wireless LAN security (Infrastructure mode)	-	WEP, WPA-PSK/WPA2-PSK (TKIP/AES), LEAP (CKIP), EAP-FAST (TKIP/AES), PEAP (TKIP/AES), EAP-TTLS (TKIP/AES), EAP-TLS (TKIP/AES)
AirPrint®	-	Yes
Wired LAN	-	10/100 Base-TX
Memory		
Flash (for label templates)	-	6 MB
Locations (for label templates)	-	255
Power		
Power	220V - 240V AC internal power supply	100V - 240V AC external power adapter (auto switching)
Battery (optional accessory)	-	Rechargeable Li-ion battery including base
Battery print yield	-	4300 labels (monochrome), 1400 labels (2 colour)
Battery charging time	-	Less than 2 hours 30 minutes
Weights / Dimensions		
Dimensions	125mm (W) x 142mm (D) 213mm (H)	125mm (W) x 145mm (D) x 234mm (H)
Weight	1.15kg	1.16kg

Specifications

QL-800

QL-820NWB

Package content		
In the box	Label Printer DK-11201 29mm x 90mm x 100 pcs Standard address die-cut label DK-22251 62mm x 5 metres continuous length Red/Black label USB cable AC power adapter User guide	Label Printer DK-11201 29mm x 90mm x 100 pcs Standard address die-cut label DK-22251 62mm x 5 metres continuous length Red/Black label USB cable AC power adapter User guide
Software / Firmware		
Operating system support (visit https://support.brother.com for latest downloads and support)	Microsoft® Windows Vista®, Windows® 7, Windows® 8 Windows® 8.1, Windows® 10 Mac OS® X v 10.10, 10.11, 10.12 Android™ 4.1 or higher	Microsoft® Windows Vista®, Windows® 7, Windows® 8, Windows® 8.1, Windows® 10 Windows Server® 2008, 2008 R2, 2012, 2012 R2 Mac OS® X v 10.10, 10.11, 10.12 Android™ 4.1 or higher (SDK) iOS® 6, 7, 8, 9, 10 or higher (SDK only) iOS® 8, 9, 10 or higher (iPrint & Label)
SDK availability (https://www.brother.co.jp/eng/dev/index.aspx)	b-PAC (for Windows®)	b-PAC (for Windows®) Brother Print SDK for Android™ Brother Print SDK for iPhone®, iPad® (for iOS®)
Supported printer commands	Raster	ZPLII emulation (upon request) ESC/P P-touch Template Raster
Barcode symbologies (using P-touch Editor)	CODE39, CODE128, UCC/EAN128(GS1-128), ITF(I-2/5), CODABAR(NW-7), UPC-A, UPC-E, EAN13, EAN8, ISBN-2(EAN13 AddOn2), ISBN-5(EAN13 AddOn5), Laser Barcode, POSTNET, RSS(RSS14 Standard, RSS14 Truncated, RSS14 Stacked, RSS14 Stacked Omni, RSS Limited, RSS Expanded, RSS Expanded Stacked), PDF417(Standard, Truncate, Micro), QR code(Model1, Model2, Micro), Data Matrix(ECC Square, ECC Rectangular), MaxiCode(Model2, Model3, Model4, Model5) RSS symbols / CODE93 / POSTNET / UPC/EAN EXTENSION / MSI / QR Code (model 1, model 2, micro QR)PDF417 (Standard, Truncate, MicroPDF417) / Data Matrix(ECC200 Square, ECC200 Rectangular) / MaxiCode / Aztec	
Barcode symbologies (Built-in printer firmware)	-	CODE39, CODE128, UCC/EAN-128(GS1-128), ITF(I-2/5), CODABAR(NW-7), UPC-A, UPC-E, EAN13(JAN13), EAN8, GS1 DataBar(RSS)(GS1 DataBar Omnidirectional, GS1 DataBar Truncated,GS1 DataBar Stacked, GS1 DataBar Stacked Omnidirectional,GS1 DataBar Limited, GS1 DataBar Expanded,GS1 DataBar Expanded Stacked), PDF417(Standard, Truncate, Micro), QR Code(Model 1, Model 2, Micro), Data Matrix (ECC200 Square, ECC200 Rectangular), MaxiCode, CODE93, POSTNET, UPC-E EXTENTION
Internal fonts	-	Bitmap fonts: Letter Gothic Bold, Helsinki, Brussels, San Diego, Brougham Font sizes: 24, 32, 49 dots Outline fonts: Letter Gothic Bold, Helsinki, Brussels Font sizes: 33 dots - 400 dots (22 sizes)
System Requirements PC / Mac OS® systems		
Operating System	Windows Vista®, Windows® 7 - 8 - 8.1 - 10 Mac OS® X v10.9.x - 10.10.x - 10.11.x - 10.12.x Windows Server® 2008, 2008 R2, Windows® Server 2012, 2012 R2	
Interface	Windows®: USB Port (USB 1.1, 2.0, or 3.0 protocol) Wireless LAN: IEEE802.11b/g/n, Wired LAN: 10/100 BASE-TX, Bluetooth 2.1 + EDR Mac OS®: USB Port (USB 1.1 or 2.0 protocol) Wireless LAN: IEEE802.11b/g/n, Wired LAN: 10/100 BASE-TX, Bluetooth 2.1 + EDR MFi	
Hard Disk Requirements	Windows®: 600MB or more, Mac OS®: 500MB or more	
Microsoft Office Support	Microsoft® Word, Excel, Outlook: 2007 - 2010, 2013 - 2016	

brother

at your side



"Made for iPod®," "Made for iPhone®," and "Made for iPad®" mean that an electronic accessory has been designed to connect specifically to iPod®, iPhone®, or iPad®, respectively, and has been certified by the developer to meet Apple® performance standards. Apple® is not responsible for the operation of this device or its compliance with safety and regulatory standards. Please note that the use of this accessory with iPod®, iPhone®, or iPad® may affect wireless performance.

iPad®, iPhone® and iPod® are trademarks of Apple® Inc., registered in the U.S. and other countries.

The Bluetooth word mark and logos are owned by the Bluetooth SIG, Inc. and any use of such marks by Brother Industries, Ltd. is used under license.

All specifications are correct at the time of printing. Brother is a registered trademark of Brother Industries Ltd. Brand product names are registered trademarks or trademarks of their respective companies.

