

Pro Tape range



Strong Adhesive



Flexible ID



Security



Self-Laminating



Professional grade labels

Developed to meet the needs of professionals looking for reliable long-term identification that withstands the test of time.

**MARK OF A SMART
PROFESSIONAL**



Pro Tape range

Pro Tape range has been designed to meet the needs of electricians, network installers and other professionals.

MARK OF A SMART
PROFESSIONAL

Strong Adhesive Tape

Textured and smooth surfaces



In independent laboratory testing, Brother Strong Adhesive Tape maintained 3 times more strength on textured surfaces than Brother standard laminated tape on the average. This makes it ideal for long term labelling even in the harshest conditions, especially on textured surfaces.

- Use on smooth and textured surfaces.

Self-Laminating Tape

Network cable identification



The protective overlamine being applied to the whole label at the time of printing, use 24mm label width that can wrapped around CAT5E and even the thicker CAT6A network cables and still protect the text on the label.

- Use 24mm label width for cables with a diameter of 3mm to 6.6mm.
- Use 36mm label width for cables with a diameter of 3mm to 10.4mm.

Flexible ID Tape

Wire and cable identification



Developed for electricians, network infrastructure, panel builders and other industries that require a reliable cable identification solution, this tape can be used to mark pipes or other smaller cylindrical shaped items where other tapes may peel over time.

- Use for wrapping around cables with a diameter of 3mm or more.
- Use as a flag label around cables with a diameter of 3mm or more.

Flag Tape

Cable identification



Suitable for cables with small diameter and ideal for fibre optic cable identification in the network industry. The label is a special pre-cut shape and once printed the long "tail" can be placed around the cable and the label simply folded over the tail to lock the label into position.

- Use for cables with a diameter of 2.0 to 8.0mm.

Security Tape

Tamper evident labelling



When printed and applied, the label appears the same as a standard black on white label. However, if the label is removed, a checkerboard pattern is left that ensures that the label cannot be re-applied once peeled and shows that the label has been tampered with.

- Use for asset tagging to ensure the label cannot be re-applied to another asset.
- Use on the edge of panels or covers to show if label has been tampered with.

Heat Shrink Tube

Wire and cable identification



This special non-adhesive tape is made of a special material that is wound in the tape cassette as a flat tube. Once printed, the tube is opened up and passed over a cable or terminating connector. After heated with a heat gun, the tube will shrink to about half its original width, and grips the cable.

- Use for identification of cables and terminating connectors. (Shrink ratio: 3:1).

Stencil Tape

Electrochemical etching/markings



When printed, small holes are made in the tape which allows the etching chemical to permeate through the tape. An etching pad is placed over the tape and pushed onto the metallic item, an electrical circuit is completed. The metal then discolours and is permanently marked with serial numbers or other information.

- Requires electrochemical etching equipment (not available from Brother).

Professional Packaging

Clearly display the recommended labelling application and tape information.

- Clear application photograph for immediate understanding of the labelling application.
- Detailed tape information to ensure purchase of the right tape.
- Display of TZe label to show the label colour.



Other tapes in the range have a printed background to identify the tape is clear or has any security function.



Pro Tape range

	6mm	9mm	12mm	18mm	24mm	36mm
--	-----	-----	------	------	------	------

TZe STRONG ADHESIVE LAMINATED TAPE - 8M LONG

Black on White	TZe-S211	TZe-S221	TZe-S231	TZe-S241	TZe-S251	TZe-S261
Black on Clear		TZe-S121	TZe-S131	TZe-S141	TZe-S151	
Black on Yellow		TZe-S621	TZe-S631	TZe-S641	TZe-S651	
Black on Matt Silver				TZe-SM941	TZe-SM951	TZe-SM961

TZe FLEXIBLE ID LAMINATED TAPE - 8M LONG

Black on White	TZe-FX211	TZe-FX221	TZe-FX231	TZe-FX241	TZe-FX251	TZe-FX261
Black on Yellow	TZe-FX611	TZe-FX621	TZe-FX631	TZe-FX641	TZe-FX651	TZe-FX661

TZe SELF-LAMINATING TAPE - 8M LONG

Black on White					TZe-SL251	TZe-SL261
Black on Yellow					TZe-SL651	TZe-SL661

TZe SECURITY LAMINATED TAPE - 8M LONG

Black on White				TZe-SE4	TZe-SE5	
----------------	--	--	--	---------	---------	--

STe STENCIL TAPE - 3M LONG

Black on White				STe-141	STe-151	STe-161
----------------	--	--	--	---------	---------	---------

FLe FLAG (DIE-CUT) - 72 LABELS

Black on White					FLe-2511*	
Black on Yellow					FLe-6511*	

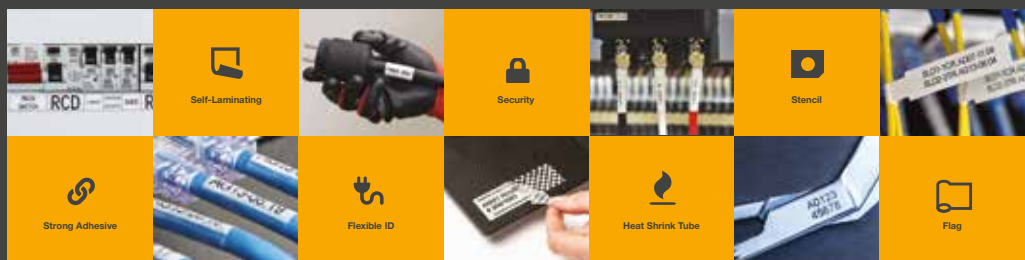
* Labels are: 45mm x 21mm when printed. 45mm x 10.5mm once applied.

	5.2mm	9mm	11.2mm	21mm	31mm
--	-------	-----	--------	------	------

HSe HEAT SHRINK TUBE - 1.5M LONG (Shrink ratio: 3:1)



Black on White	HSe-211E	HSe-221E	HSe-231E	HSe-251E	HSe-261E
Black on Yellow	HSe-611E	HSe-621E	HSe-631E	HSe-651E	HSe-661E

Pro Tape range



Pro Tape label samples

TZe Strong Adhesive Laminated Tape

6mm TZe-S211	PANEL AD07-05
9mm TZe-S221	Ports A1-A4 to AD07-08 Ports 01-04
12mm TZe-S231	MAIN LIGHTS
18mm TZe-S241	Lights Sockets Cooker Spare RCD
24mm TZe-S251	Date of last inspection: 20/07/20 Recommended date of next inspection: 20/07/21
36mm TZe-S261	 Martin Braun 07549 28230 www.ges-elec.eu
9mm TZe-S621	D01
12mm TZe-S631	D.B. 27 WAY 3
18mm TZe-S641	MAIN SWITCH RCD UPSTAIRS SOCKETS COOKER SHED
24mm TZe-S651	 DANGER 400 VOLTS
9mm TZe-S121	Black on Clear
12mm TZe-S131	Black on Clear
18mm TZe-S141	Black on Clear
24mm TZe-S151	Black on Clear
18mm TZe-SM941	Black on Matt Silver
24mm TZe-SM951	Black on Matt Silver
36mm TZe-SM961	Black on Matt Silver

TZe Flexible ID Laminated Tape

6mm TZe-FX211	L1
9mm TZe-FX221	L2
12mm TZe-FX231	L3
18mm TZe-FX241	TZe-FX241
24mm TZe-FX251	AD07-11:37 AD07-11:37 AD07-11:37 AD07-11:37
36mm TZe-FX261	TZe-FX261 TZe-FX261 TZe-FX261 TZe-FX261 TZe-FX261 TZe-FX261
6mm TZe-FX611	N1
9mm TZe-FX621	N2
12mm TZe-FX631	TO AD07-08:13 TO AD07-08:13
18mm TZe-FX641	TZe-FX641 TZe-FX641 TZe-FX641 TZe-FX641
24mm TZe-FX651	AD07-11:37 AD07-11:37 AD07-11:37 AD07-11:37
36mm TZe-FX661	TZe-FX661

TZe Self-Laminating Tape

24mm TZe-SL251	AD07-11:37 AG09-08:18
36mm TZe-SL261	AD07-15:F1 AG13-08:21
24mm TZe-SL651	PANEL AD07-12
36mm TZe-SL661	TZe-SL661

TZe Security Laminated Tape

18mm TZe-SE4	TZe-SE4
24mm TZe-SE5	TZe-SE5

FLe Flag Tape

45mm x 21mm when printed 45mm x 10.5mm once applied	
FLe-2511	
FLe-6511	10:00-510W/10:11-100V AD07-11:01/AG13-08:01

HSe Heat Shrink Tube

5.2mm HSe-211E	HSe-211E
HSe-611E	HSe-611E
9mm HSe-221E	HSe-221E
HSe-621E	HSe-621E
11.2mm HSe-231E	HSe-231E
HSe-631E	HSe-631E
21mm HSe-251E	HSe-251E
HSe-651E	HSe-651E
31mm HSe-261E	HSe-261E
HSe-661E	HSe-661E

STe Stencil Tape

18mm STe-141	METALLIC SURFACE ETCHING
24mm STe-151	METALLIC SURFACE ETCHING
36mm STe-161	GLASS SURFACE ETCHING

Choose the right tape for the job

For optimum results, use the correct tape for the intended application.

Smooth or textured surfaces:

Strong Adhesive Tape

Cable identification:

Self-Laminating Tape

Flexible ID Tape

Heat Shrink Tube

Flag Tape

For tamper evident labelling:

Security Tape

For electrochemical etching:

Stencil Tape

WIRE AND CABLE IDENTIFICATION

GENERAL IDENTIFICATION

	Flexible ID Tape	Self-Laminating Tape	Heat Shrink Tape	Flag Tape	Strong Adhesive Tape	Security Tape	Stencil Tape
SURFACE							
Smooth surfaces	✓				✓	✓	✓
Textured surfaces	●				✓	●	
Cable wrap	✓	✓	✓				
Cable flag	✓			✓			

✓ Recommended ● Acceptable

Heat Shrink Tube	Part Number	Width	Recommended cable diameter
	HSe-211E/HSe-611E	5.2mm	Ø 0.8mm to 3.1mm
	HSe-221E/HSe-621E	9mm	Ø 1.6mm to 5.4mm
	HSe-231E/HSe-631E	11.2mm	Ø 2.1mm to 7mm
	HSe-251E/HSe-651E	21mm	Ø 4.2mm to 13.5mm
	HSe-261E/HSe-661E	31mm	Ø 6.3mm to 20mm

P-touch label printer compatibility

Part Number	Max tape width	Strong Adhesive Tape	Flexible ID Tape	Security Tape	Heat Shrink Tape	Self-Laminating Tape	Flag Tape	Stencil Tape
PT-E110	12mm	✓	✓					
PT-E300	18mm	✓	✓	✓	✓			✓
PT-E550W	24mm	✓	✓	✓	✓	✓		✓
PT-E800T, PT-E850TKW	36mm	✓	✓	✓	✓	✓	✓	✓
PT-P900W, PT-P950NW	36mm	✓	✓	✓	✓	✓	✓	✓

brother
at your side

All specifications are correct at the time of printing and are subjected to change. Brother is a registered trademark of Brother Industries Ltd. Brand product names are registered trademarks or trademarks of their respective companies.